

SPECIFICATIONS

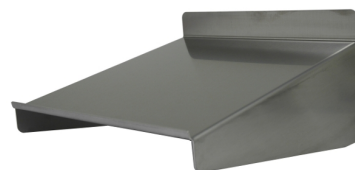
ARTICLE

Designation : **Stainless steel wall-mounted shelf**

Code bobet : **70114**

Selling Unit : **Unit**

Non-contractual pictures

**CHARACTERISTICS**

- One-piece design
- In austenitic stainless steel 1.4307 (304L)
- Tray in brushed polished stainless steel sheet, thickness 1.5 mm, with simple backboard
- Wall-mounting by integrated brackets or with magnets thanks to two holes
- Tray slightly leaned - 305x305 mm - for A4 format sheets (vertically and horizontally)
- Front return

DIMENSIONS:

- Overall length : 315 mm
- Overall width : 310 mm
- Overall height : 164 mm

CAUTION ! This shelf is not used to stock. It doesn't support loads.

ALIMENTARITY :

To ensure durability, our products are manufactured in austenitic stainless steel (food grade approved), standard AISI 1.4307 (304L).

Manufactured in our own Production Department under protected atmosphere and in accordance with the welding process "T.I.G".

