

SPECIFICATIONS

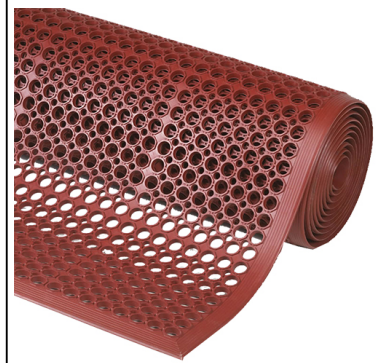
ARTICLE

Designation : **Sanitop mat**

Code bobet : **12503**

Selling Unit : **Unit**

Non-contractual pictures

**CHARACTERISTICS**

This anti-fatigue mat provides simple solutions to almost all industrial or food applications.

TECHNICAL CHARACTERISTICS

- Description : Duckboard with 4 beveled edges for a safe access for users and dollies
- Material : Mixture of rubber and nitrile/BR, very resistant, designed to offer optimal durability
- Process : Compression molding
- Non-slip surface
- Silicone free, so appropriated to paint workshop for vehicles
- Dimensions : 910 x 1520 mm
- Thickness : 13 mm
- Weight : 11 kg, its low weight makes the handling easy during cleaning
- Colour : red, resistant to most oils/greases
- Optimal draining of liquids and debris. Efficient thanks to its holes and elevation, letting a clean and dry surface
- Self-draping

TESTS

- Resistance to weight ASTM D412 : 17 kg
- Spring rate ASTM D412 : 227.7%
- Compression deflection (measured with a thickness approx. 2.5 cm) :
 - * Original thickness : 2.52 cm
 - * Thickness with 20 PSI (58 kg/cm²) : 1.02 cm
 - * Deflection with 20 PSI : 1.50 cm
 - * Thickness with 40 PSI (116 kg/m²) : 0.81 cm
 - * Deflection with 40 PSI : 1.71 cm

- Coefficient of static friction ASTM C1028-96 : 0.78
- Hardness : 52° Shore A

All products are tested by an independant laboratory.

APPLICATION / MAINTENANCE :

Medium industries, wet or dry areas, food industries, slaughterhouses, dairies, fishing industries...