

SPECIFICATIONS

**ARTICLE**Designation : **Matador® SS3000 slaughtering pistol**Code bobet : **24806**Selling Unit : **Unit**

Non-contractual pictures

CHARACTERISTICS

CARACTERISTIQUES PRINCIPALES		CODE 24806
ANIMAUX CONCERNÉS	Boeufs, veaux, taureaux, chevaux, montons	
MASSE	2,73 KG	
LONGUEUR	310 mm	
LONGUEUR BROCHE (CHARGE ROUGE)	85 mm	
VERROUILLAGE	A bille	
NOMBRE DE TIRS MAXIMUM	40 000	
DURÉE DE VIE MAXIMUM	3 ans	
MATÉRIAU	Acier traité	

The MATADOR® is a captive pin kill gun using 6.8/11 caliber pyrotechnic charges. It is used when slaughtering animals such as cattle, horses and other animals of the same size. It is composed of a barrel and a handle connected by an articulation fork.

CHARACTERISTICS :

Dimensions: Ø60mm, length 310mm

Mass: 2.73 kg

Spindle diameter 12 mm

Charges (cartridges): MATADOR® caliber 6.8/11 yellow, red, black (see paragraph CHARGES)

Maximum authorized rate: 30 shots/hour

Lifespan: maximum 40,000 shots

For all other information, see the product leaflet.

CARTRIDGES :

Loads to use in our SS3000 CaL 27 pistol:

- BLACK LOADS:

* Bobet code 24204 = box of 500

* Minimum spindle output speed: 48 m/s

* Spindle output: 90 mm

* Reserved for large cattle with significant conformations and having significant resistance (e.g. mountain cattle) and only in the case of bulls and young cattle

- RED LOADS:

- * Bobet code 24205 = box of 500
- * Minimum spindle output speed: 44 m/s
- * Spindle output: 90 mm
- * Standard model for general use (bulls < 3 years old, oxen, young cattle, cows, heifers)

- **YELLOW LOADS:**

- * Bobet code 24203 = box of 500
- * Minimum spindle output speed: 37 m/s
- * Recommended for the slaughter of calves, heifers and cull cows weighing not more than 450 kg (live), horses, and sheep

SAFETY AND MAINTENANCE :

- You must have a minimum of 2 guns at the slaughter site. Any pistol that is defective or shows signs of malfunction must be replaced immediately.

WARNING: Never remove by hand a badly exploded charge, engaged in the barrel.

Never point the gun at yourself or another person even if the gun is unloaded.

MAINTENANCE :

- Optional (sold separately): Tool kit for the maintenance of this gun

THE TOOL KIT INCLUDES:

- A 36 mm spanner: used for the handle end (BOBET code 21171) and the safety handle (BOBET code 15640).
- A 46 mm spanner: used on the barrel + bolt (Code 15443) and the barrel extension (Code BOBET 12432).
- A small flat screwdriver: allows the insertion of the locking spring (Code BOBET 15642).
- Grip spray: use approximately every 3 months after degreasing and cleaning the threads.
- Black grease for the thread: use after each disassembly on the cleaned internal and external threads (if you apply spray grip, use the black grease imperatively afterwards).
- Spring grease: apply to the locking springs (BOBET Code 15642), and lightly lubricate the hammer spring (BOBET Code 7361) and the cleat spring (BOBET Code 20995).

N.B: See the instructions for use (delivered with the gun) for the daily, monthly and regular maintenance of certain spare parts.

IMPORTANT :

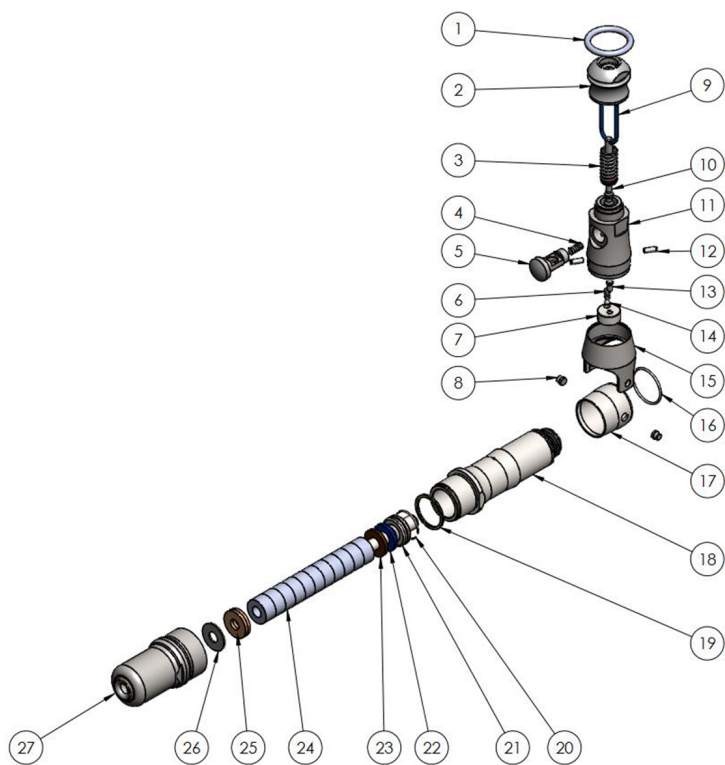
The constituent parts of the slaughter gun, just like the charges, being an integral part of the device, only those studied, controlled, supplied or recommended by us must be used in our LE MATADOR® slaughter guns (Interministerial Order of the April 10, 1981 - Official Journal of April 17, 1981 - Chapter II - Art. 7 and Chapter IV - Art. 9 relating to the approvals and conditions of use of this equipment). Any derogation from the imperatives of the text of this decree, like all the prescriptions for the use of this equipment, will engage, in the event of an accident, the responsibility of those who take the initiative.

STANDARDS :

Compliant:

- To the European machine directives 2006/42/EC.
- Directive 93/119/EC on the protection of animals at the time of their slaughter and Directive on Animal Welfare EC 2009/1099
- To the decree of 12/12/1997 relating to the processes of immobilization, stunning and killing of animals and the conditions of animal protection in slaughterhouses.

- In addition, this device has been voluntarily CE type approved by SUVA, Technical Sector, Certification Body SCESp0008, European Notification, Identification Number 1246, PO Box 4358, 6002 Luzern, SWITZERLAND, under number E7192 on February 14 2019.



Rep	Désignation	Qte	CODE TERMET	Code article BOBET
<i>Pièces communes</i>				
1	Anneau embout poignée	1	5907	21172
2	Embout	1	16	21171
3	Ressort marteau	1	21	7361
4	Ressort taquet	1	5795	20995
5	Taquet	1	18	10642
6	Ressort verrouillage	1	3695	15642
8	Axe d'accouplement	2	34	7371
9	Cordon d'armement	1	41	7381
10	Marteau	1	19	7360
11	Poignée	1	3705	15640
12	Goupille	2	26	10644
13	Percuteur	1	24	7363
14	Bille de verrouillage	1	3698	15648
15	Chape de basculement	1	32	10647
16	Jonc de verrou	1	29	7368
19	Joint de blocage	1	40	7380
20	Jonc tête de broche	1	30	7375
<i>Pièces spécifiques</i>				
7	Porte culot	1	10647	24802
17	Bague	1	10443	24805
18	Canon + verrou	1	10685	24804
21	Broche standard	1	8	7374
22	Rondelle protection arrière bleu	1	1269	12417
23	Rondelle protection arrière brun	1	38	7377
24	Anneau élastomère (sachet de 10 pièces)	1	1	7379
25	Rondelle protection avant	2	39	7378
26	Disque étanchéité	1	65	7376
27	Rallonge standard	1	1590	12432