

SPECIFICATIONS

ARTICLE

Designation : **Grey multi-pockets jacket**

Code bobet :

17001 : S.2

17002 : S.3

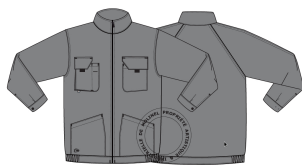
17003 : S.4

Selling Unit : **Unit**

Non-contractual pictures



CHARACTERISTICS



- Material : Twill 245gr/m², 35% cotton, 65% polyester
- Safety assembly
- Thread assembly stitches in matching tones
- Colour : grey

DESCRIPTION :

- Funnel collar
- Raglan back armholes
- Adjustable cuffs by 1 plastic pressure with double positioning cap.
- 1 elbow clip.
- 1 right front chest pocket with gusset, flap closed with a velcro tape, pocket including a pencil compartment.
- 1 patch left front chest pocket, flap closed with a velcro tape.
- 2 low patch pockets, oblique openings
- Middle front closure with zipper
- Elasticated waistband on the sides
- Black "M" embroidery on the lower right front pocket

MAINTENANCE :

- Wash : Maximum temperature : 85°C
- Do not whiten
- Ironing : Maximum temperature : 150°C
- Dry cleaning : All solvents except Trichloroethylene
- Recommended tumble dry temperature : Moderate (60 ° C)

Veste, Blouson, Blouse Homme

Taille	32	34	36	38	40	42	44	46	48	50	52	54	56	58	60	62	64	66
	-0		0		1		2		3		4		5		6		7	
	XXS		XS		S		M		L		XL		XXL		3XL		4XL	
A - Tour de poitrine en cm	72	76	80	84	88	92	96	100	104	108	112	116	120	124	128	132	136	140

Les mesures doivent être prises directement sur le corps, sans serrer.

Commander la taille correspondant à la plus grande de vos mensurations tour de poitrine ou tour de taille.

A - Le Tour de Poitrine : Il doit être mesuré à l'endroit le plus fort.