



SPECIFICATIONS



ARTICLE

Designation : **DELTA 50 apron**

Code bobet :

26541 : White, standard, 90x115 | **26920 : Blue, automatic, 90x115**

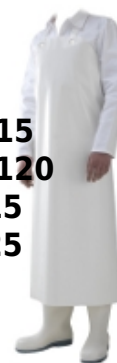
23306 : White, standard, 100x115 | **24157 : Blue, automatic, 120x120**

26540 : White, automatic, 90x115 | **26542 : White, harness, 90x115**

23307 : White, automatic, 100x115 | **23308 : White, harness, 90x125**

Selling Unit : **Unit**

Non-contractual pictures



CHARACTERISTICS

- Polyurethane
- Colour : white or blue
- Thickness : 500 (± 50)
- Weight : 600 g/m²
- Very smooth, easy to clean
- 3 possible settings (see picture below)
- Apron with heat sealed eyelets :
 - * Adjustment buckle in food safe polypropylene
 - * White plastic hook and braided polyester elastic

APPLICATION :

They are suitable for use in food industries (high resistance to animal greases and blood).

Working temperature : -20°C to +100°C

APPLICATION : Fishmonger's shop, oyster farming, hospital, dishwashing, chemical industries, dairies, cheese dairies, red meat, poultry...

WASH :

The apron should be washed with soapsuds at 40°C or in a mixture of water and soft detergent and rinsed with cleared water. Do not use toxic products to wash or rinse.

The apron must be laid on to dry without spinning, and stored dry, away from light in a dry and ventilated place.

The apron must be replaced as soon as you notice wear signs on it.

STANDARDS :

- In compliance with the EU regulation 2016/425
 - * NF EN ISO 13688:2013 - Protective clothes - General requirements
 - * NF EN 14325 - for the paragraphs 4.4, 4.7, 4.9 and 4.10 - mechanical properties
- Apron in compliance with the EU Regulation N°10/2011 relative to materials and items in plastic to be in contact with all types of foodstuffs except the acid ones (pH under 4.5)
- Apron in compliance with the article 33 of the REACH Regulation N°1907/2006 and its amendments relative to products containing substances of very high concern
- Does not contain any phthalate, nor silicon (and derivatives), nor bisphenol

Dimensions (cm)	Colors	Setting	Code Bobet
90x115	White	Standard	26541
100x115	White	Standard	23306
90x115	White	Automatic	26540
100x115	White	Automatic	23307
90x115	Blue	Automatic	26920
120x120	Blue	Automatic	24157
90x115	White	Harness	26542
90x125	White	Harness	23308



Unbreakable and detectable plastic hook for Standard and Harness fittings.

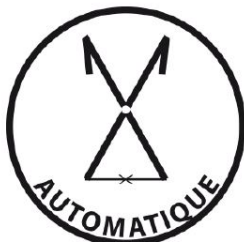
STANDARD
Adjustable strap around the neck closure in the back with a hook and an elastic band



HARNESS
Straps over the shoulders with adjustment buckles for a better comfort, closure in the back with a hook and an elastic band



AUTOMATIC
Straps over the shoulders, the closure is made by tying up the apron in the back

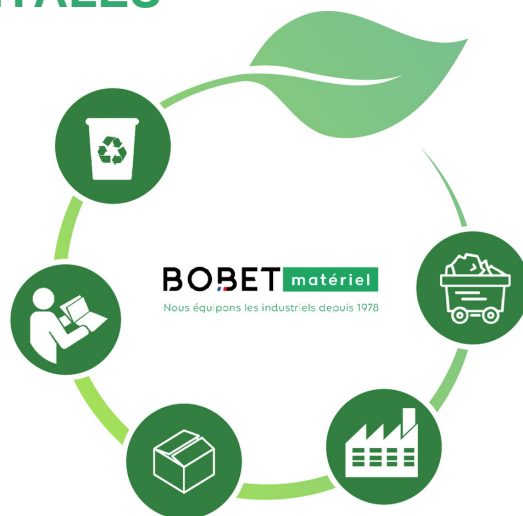


CARACTERISTIQUES ENVIRONNEMENTALES

Tablier DELTA 50

Codes BOBET : 26920, 26540, 26541, 26542, 26540, 24157, 26920, 23306, 23307, 23308, 26542, 23306, 23307, 23308, 26541, 24157

Les impacts environnementaux de ce produit ont été analysés le long de son cycle de vie.



FABRICATION

- Fournisseur français
- Fabrication française